



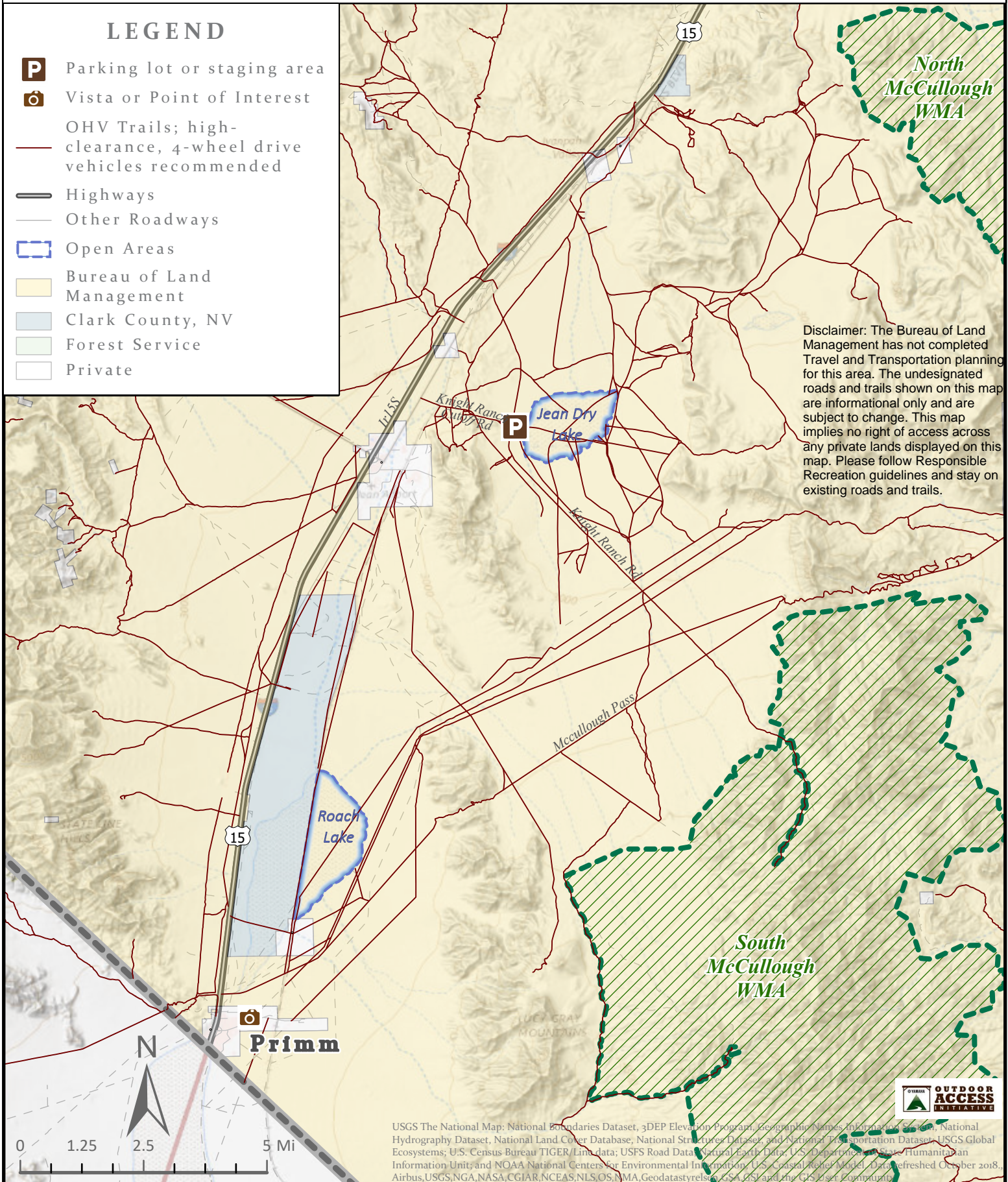
Jean and Roach Dry Lake Beds Dispersed OHV Recreation Area Trails

Clark County, Nevada



LEGEND

- P** Parking lot or staging area
- Vista or Point of Interest
- OHV Trails; high-clearance, 4-wheel drive vehicles recommended
- Highways
- Other Roadways
- Open Areas
- Bureau of Land Management
- Clark County, NV
- Forest Service
- Private



Disclaimer: The Bureau of Land Management has not completed Travel and Transportation planning for this area. The undesignated roads and trails shown on this map are informational only and are subject to change. This map implies no right of access across any private lands displayed on this map. Please follow Responsible Recreation guidelines and stay on existing roads and trails.

USGS The National Map: National Boundaries Dataset, 3DEP Elevation Program, Geographic Names Information System, National Hydrography Dataset, National Land Cover Database, National Structures Dataset, and National Transportation Dataset; USGS Global Ecosystems; U.S. Census Bureau TIGER/Line data; USFS Road Data; Natural Earth Data; U.S. Department of State Humanitarian Information Unit; and NOAA National Centers for Environmental Information; U.S. Coastal Relief Model; Data refreshed October 2018. Airbus, USGS, NASA, CGIAR, NCEAS, NLS, OS, NMA, Geodatastyrelsen, USA, BSL and the GIS User Community