



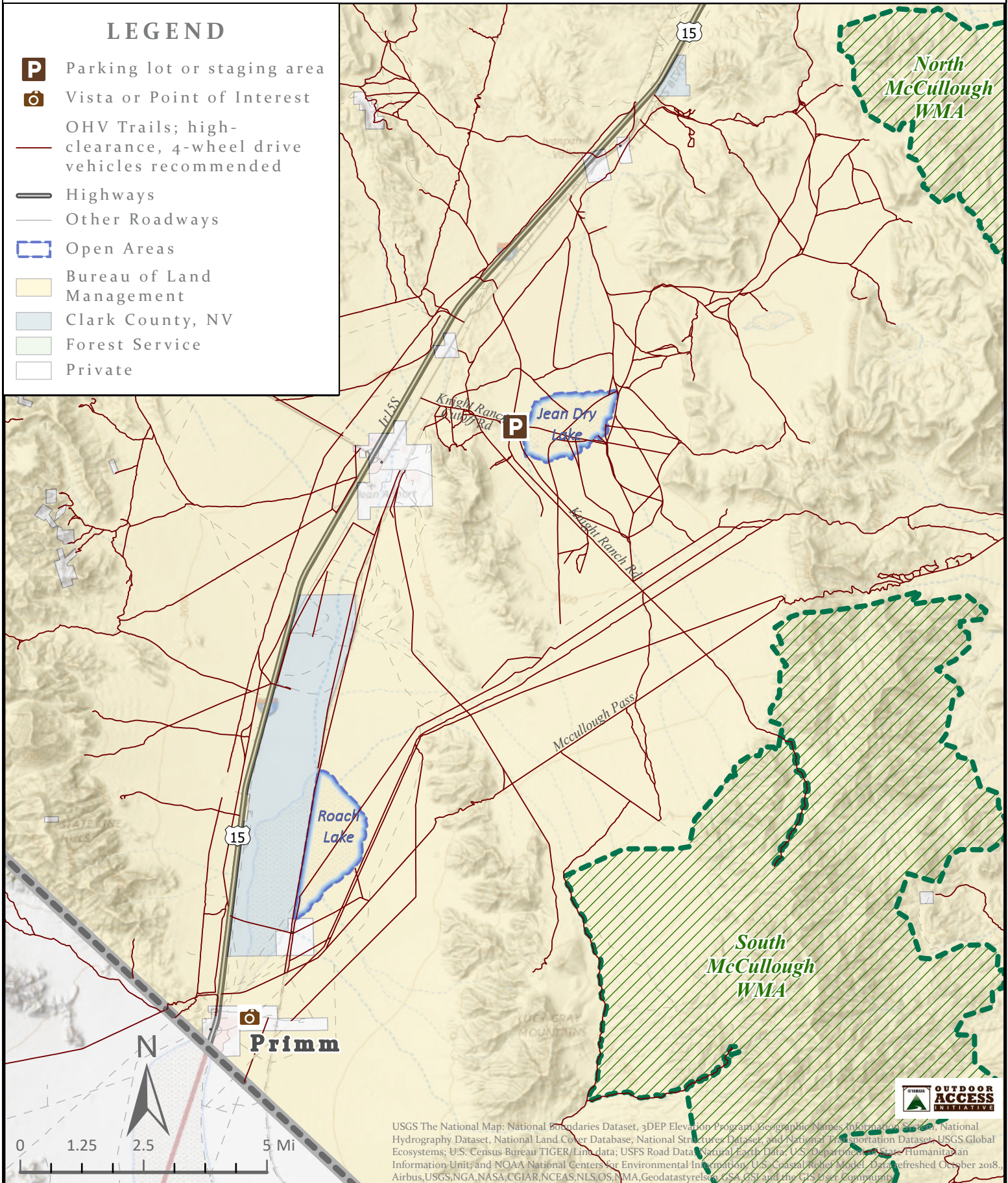
Jean and Roach Dry Lake Beds Dispersed OHV Recreation Area Trails

Clark County, Nevada



LEGEND

- P** Parking lot or staging area
- Vista or Point of Interest
- OHV Trails; high-clearance, 4-wheel drive vehicles recommended
- Highways
- Other Roadways
- Open Areas
- Bureau of Land Management
- Clark County, NV
- Forest Service
- Private



USGS The National Map: National Boundaries Dataset, 3DEP Elevation Program, Geographic Names Information System, National Hydrography Dataset, National Land Cover Database, National Structures Dataset, and National Transportation Dataset; USGS Global Ecosystems; U.S. Census Bureau TIGER/Line data; USFS Road Data; Natural Earth Data; U.S. Department of State Humanitarian Information Unit; and NOAA National Centers for Environmental Information; U.S. Coastal Relief Model; Data refreshed October 2018. Airbus, USGS, NASA, NASA, CGIAR, NCEAS, NLS, OS, NMA, Geodatastyrelsen, USA, OSI and the GIS User Community

