



# Illipah Reservoir System Recommended OHV Trails

White Pine County, NV



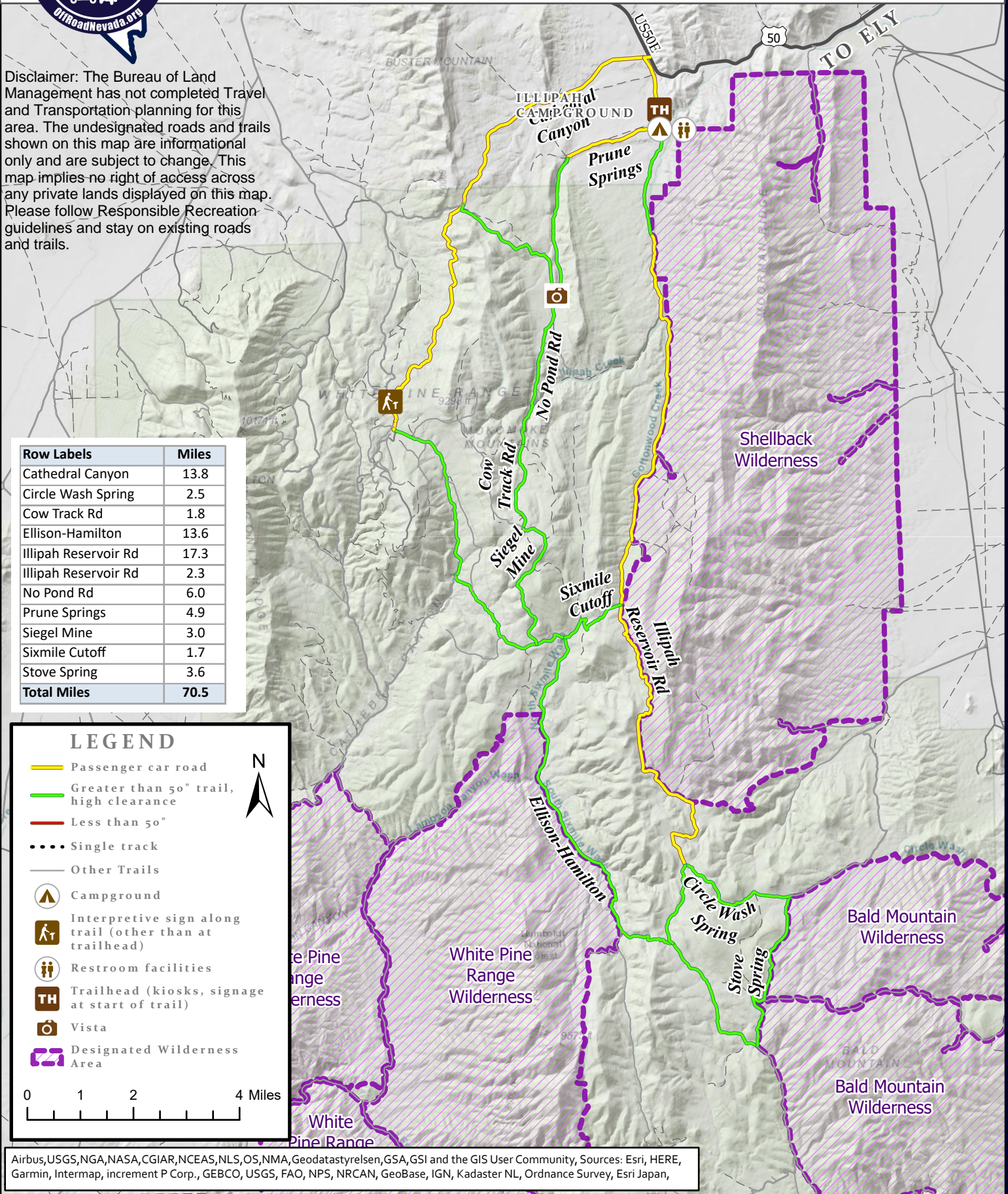
Disclaimer: The Bureau of Land Management has not completed Travel and Transportation planning for this area. The undesignated roads and trails shown on this map are informational only and are subject to change. This map implies no right of access across any private lands displayed on this map. Please follow Responsible Recreation guidelines and stay on existing roads and trails.

Row Labels	Miles
Cathedral Canyon	13.8
Circle Wash Spring	2.5
Cow Track Rd	1.8
Ellison-Hamilton	13.6
Illipah Reservoir Rd	17.3
Illipah Reservoir Rd	2.3
No Pond Rd	6.0
Prune Springs	4.9
Siegel Mine	3.0
Sixmile Cutoff	1.7
Stove Spring	3.6
<b>Total Miles</b>	<b>70.5</b>

### LEGEND

- Passenger car road
- Greater than 50" trail, high clearance
- Less than 50"
- Single track
- Other Trails
- Campground
- Interpretive sign along trail (other than at trailhead)
- Restroom facilities
- Trailhead (kiosks, signage at start of trail)
- Vista
- Designated Wilderness Area

0 1 2 4 Miles



Airbus, USGS, NGA, NASA, CGIAR, NCEAS, NLS, OS, NMA, Geodatastyrelsen, GSA, GSI and the GIS User Community, Sources: Esri, HERE, Garmin, Intermap, increment P Corp., GEBCO, USGS, FAO, NPS, NRCAN, GeoBase, IGN, Kadaster NL, Ordnance Survey, Esri Japan,