

## 2019 Nevada OHV Summit - Group Rides

Ride A - Approx. 51 Mi.

Groups 1 & 2 (opposite dir.)

Ride B - Approx. 53 Mi.

Groups 3 & 4 (opposite dir.)

Ride C - Approx. 88 Mi.

Group 5



## Nevada OHV Summit Ride A – Groups 1 & 2

### Saturday, Nov. 2, 2019

**RIDE OVERVIEW:** This ride is approximately 51 miles and 4-6 hours in length with key stops at the Ella Mountain Fire Lookout Tower, the Elgin Schoolhouse State Historic Site, and Kershaw Ryan State Park.

**Ride difficulty:** Normally Moderate, but could be Difficult depending on recent rains--then not recommended for four-wheel drive vehicles other than ATVs and UTVs.

**START:** Gather at 7:45 AM area so that everyone can check in, and the Group 1 & 2 rides may begin about 8 and 8:15 am. The starting location is the parking lot at Caliente City Hall (former railroad depot), 100 Depot Ave.

### RIDE HIGHLIGHTS



The Ella Mountain Fire Lookout Tower is one of only three lookouts in Nevada and the most active. It is operated by the Bureau of Land Management – Ely District and open from May through October during high “Fire Danger” periods. This site offers spectacular, 360° views of the surrounding forests and mountains.

The Lookout was built in 1964. It boasts a 14x14 live-in observation cab with catwalk atop a first level constructed of cinder block. It is now listed in the National Historic Lookout Register. By special arrangement, the tower manager will be on site to answer questions for the OHV Summit Rides on November 2.





James Webster Bradshaw homesteaded the Elgin area in 1880. Elgin was a siding and active watering stop on the San Pedro, Los Angeles and Salt Lake Railroad (now part of Union Pacific). Bradshaw's son, Reuben, donated the land and built the schoolhouse in 1922. First through eighth grades were taught in this single-room school until it closed in 1967.

This historic school was restored and donated by the Bradshaw family and is now maintained by the State of Nevada since its dedication as a historic site in October, 2018. The Elgin School house is normally closed for touring but will be opened by the Park Service for the OHV Summit Rides.

## ELGIN SCHOOLHOUSE

CONSTR. BY REUBEN BRADSHAW

**Need for a Schoolhouse:**

In 1903, the Salt Lake, San Pedro and Los Angeles Railroads were built through Rainbow Canyon. Small communities arose every few miles where there was a stop for trains and passengers.

Panaca was the closest school to the Rainbow Canyon ranches. This was too far for the children to travel every day. In 1880, the "Bullionville" school district was established and a schoolhouse was built five miles below Kershaw Canyon (Now Kershaw-Ryan State Park). Residents petitioned for another school district that would provide for a teacher that was closer to Elgin.

1921, Lincoln County finally had funds for a schoolhouse. James Bradshaw donated seven acres of his ranch across the Meadow Valley Wash for the building. His son Reuben erected the schoolhouse in 1922. The schoolhouse covered the first through eighth grades. The last year the schoolhouse was used was 1967 when the last student graduated.

8, the Bradshaw family restored the schoolhouse to its original appearance, and gave tours by request. In 2005, the Bradshaw family offered it to the Nevada State Parks. This was approved by the State Legislature, and the schoolhouse became a State Historic Site in July of 2005.

Elgin Schoolhouse 1979  
almost ten years after  
last student graduated

Elgin Schoolhouse 1993  
unoccupied since  
the early 1980's



Kershaw Ryan State Park is located two miles south of Caliente in the northern end of Rainbow Canyon with walls that tower up to 700 high. It is a beautiful and quiet park with natural springs forming a wading pool and lovely gardens and wildlife depending on the time of year. It has a 15-site campground and hiking trails making it a welcome respite and relaxation area for its visitors. OHV Summit Riders will get an opportunity to introduce themselves to the park for future visits.



## Ride A – Groups 1 and 2



## Ride A, Group 1 Course includes:

Spring Street to Caliente Tower Road to Ella Springs Rd, to Ella Mountain Road, down Pennsylvania Canyon Road and back through Rainbow Canyon on State Route 317 with its wild turkeys and horses, orchards, and beautiful hills with unique rock formations. Total ride is approximately 51 miles.

**Group 2** follows the same route only in reverse order.

## Nevada OHV Summit Ride B – Groups 3 & 4

### Saturday, Nov. 2, 2019

**RIDE OVERVIEW:** This ride is approximately 53 miles and 4-5 hours in length with key stops at the Ella Mountain Fire Lookout Tower, the Pine Canyon Dam Petroglyphs, and Barclay, NV.

**Ride difficulty: Easy** — Very basic ride with well-graded roads. You will cross Clover Creek a number of times on your way out or back into Caliente, which could vary based on recent rainfalls.

**START:** Gather at 8:15 am so that everyone can check in, and the Group 3 & 4 rides may begin about 8:30 and 8:45 am. The starting location is the parking lot at Caliente City Hall (former railroad depot), 100 Depot Ave.

### RIDE HIGHLIGHTS



The Ella Mountain Fire Lookout Tower is one of only three lookouts in Nevada and the most active. It is operated by the Bureau of Land Management – Ely District and open from May through October during high “Fire Danger” periods. This site offers spectacular, 360° views of the surrounding forests and mountains.

The Lookout was built in 1964. It boasts a 14x14 live-in observation cab with catwalk atop a first level constructed of cinder block. It is now listed in the National Historic Lookout Register. By special arrangement, the tower manager will be on site to answer questions for the OHV Summit Rides on November 2.







Pine Canyon Dam is an Army Corps of Engineers flood control dam for the railroad maintained by the Bureau of Land Management. It is a beautiful site with camp grounds and picnic areas to enjoy. Hiking can be challenging with rocky paths to climb but the reward in certain places are extraordinary views of ancient petroglyphs.



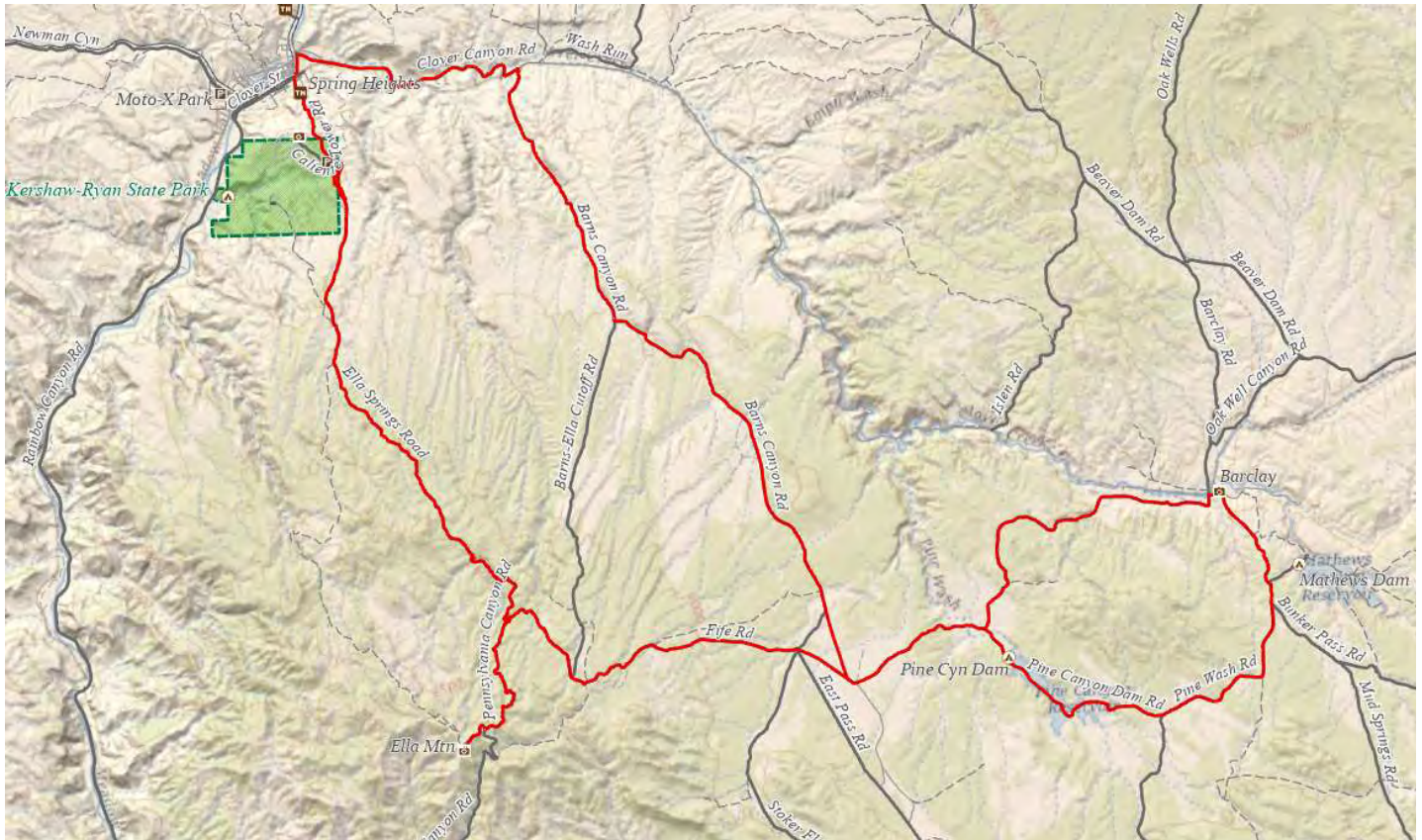




Barclay, Nevada was originally a Mormon settlement from the late 1860's it is now filled with cattle ranches and verdant hills and fields. There are so few residents that it actually appears on several ghost town lists. It has a well-preserved post office that was abandoned in 1910 and an old Mormon cemetery. You may get to watch cowboys tending their herds on horseback as you wend your way back to Caliente on Fife Road. You'll enjoy traveling the autumn, tree-lined road and fording Clover Creek where it crisscrosses the road multiple times before directing you back to Caliente.



## Ride B – Groups 3 and 4



**Ride B - Group 3 Course includes:** Spring Street to Caliente Tower Road to Ella Springs Rd, to Ella Mountain Road. Then Fife Road to Pine Canyon Dam Road, Pine Wash Road, Bunker Pass Road, and back to Fife road to Barns Canyon Road and Clover Creek Road back to Caliente. Total is approximately 53 miles.

**Group 4** follows the same route only in reverse order.



## Nevada OHV Summit Ride C – Group 5

### Saturday, Nov. 2, 2019

**RIDE OVERVIEW:** This ride is approximately 88 miles and 6-8 hours in length with key stops at the Ella Mountain Fire Lookout Tower, the Elgin Schoolhouse State Historic Site, and the Delamar Mine and Ghost Town.

**Ride difficulty:** Moderate but longer.

**START:** Gather at 7:30 am so that everyone can check in, and the Group 5 ride may begin at 7:45 am. The starting location is the parking lot at Caliente City Hall (former railroad depot), 100 Depot Ave.

### RIDE HIGHLIGHTS



The Ella Mountain Fire Lookout Tower is one of only three lookouts in Nevada and the most active. It is operated by the Bureau of Land Management – Ely District and open from May through October during high “Fire Danger” periods. This site offers spectacular, 360° views of the surrounding forests and mountains.

The Lookout was built in 1964. It boasts a 14x14 live-in observation cab with catwalk atop a first level constructed of cinder block. It is now listed in the National Historic Lookout Register. By special arrangement, the tower manager will be on site to answer questions for the OHV Summit Rides on November 2.







James Webster Bradshaw homesteaded the Elgin area in 1880. Elgin was a siding and active watering stop on the San Pedro, Los Angeles and Salt Lake Railroad (now part of Union Pacific). Bradshaw's son, Reuben, donated the land and built the schoolhouse in 1922. First through eighth grades were taught in this single-room school until it closed in 1967.

This historic school was restored and donated by the Bradshaw family and is now maintained by the State of Nevada since its dedication as a historic site in October, 2018. The Elgin Schoolhouse is normally closed for touring but will be opened by the Park Service for the OHV Summit Rides.

## ELGIN SCHOOLHOUSE

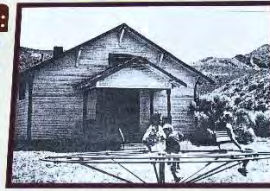



CONST BY REU

**Need for a Schoolhouse:**  
In 1903, the Salt Lake, San Pedro and Los Angeles Railroads were built through Rainbow Canyon. Small communities arose every few miles where there was a stop for trains and passengers.

Panaca was the closest school to the Rainbow Canyon ranches. This was too far for the children to travel every day. In 1890, the "Bullionville" school district was established and a schoolhouse was built five miles below Kershaw Canyon (Now Kershaw-Ryan State Park). Residents petitioned for another school district that would provide for a teacher that was closer to Elgin.

1921, Lincoln County finally had funds for a schoolhouse. James Bradshaw donated seven acres of his ranch across the Meadow Valley Wash for the building. His son Reuben vetoed the schoolhouse in 1922. The schoolhouse covered is one through eight. The last year the schoolhouse used was 1967 when the last student graduated.

8, the Bradshaw family restored the schoolhouse to its original appearance, and gave tours by request. In 2005, the Bradshaw family offered it to the Nevada State Parks. This was proved by the State Legislature, and the schoolhouse became a State Historic Site in July of 2005.

**Elgin Schoolhouse 1979**  
almost ten years after last student graduated

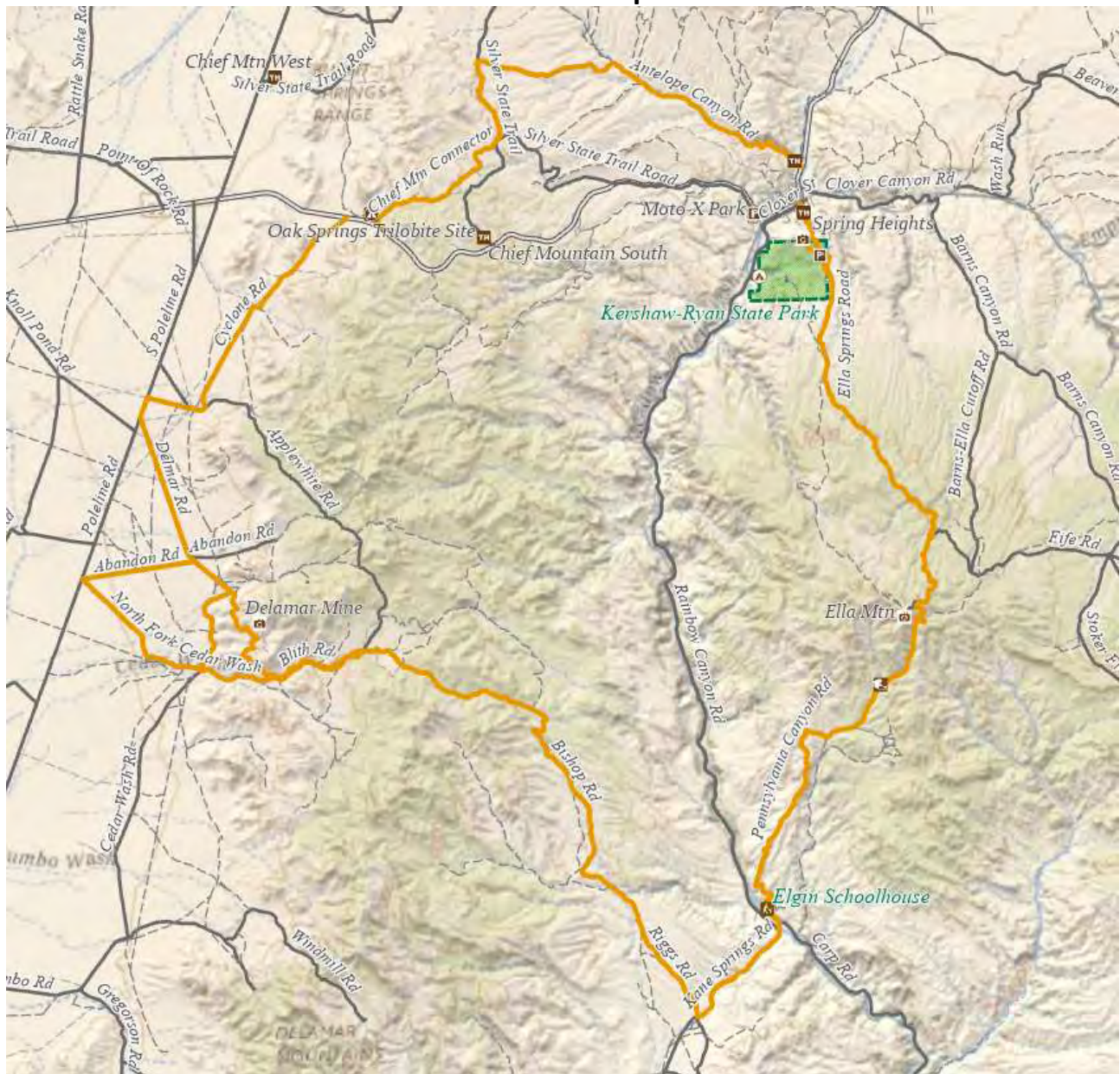
**Elgin Schoolhouse 1993**  
unoccupied since the early 1980's



Delamar, NV, is a ghost town that started in the early 1890's when gold was discovered around Monkeywrench Wash. In its heyday, there were more than 3,000 residents with a hospital, opera house, churches, a school, businesses and saloons in addition to residential houses mostly built of native rock. The mine produced \$13.5 million in gold but finally discontinued operation in 1909. The town was nicknamed the Widowmaker for miner deaths from silicosis that resulted from breathing in the fine dust created by extracting the gold from quartzite. You will see stone ruins of many houses or businesses that remain and two graveyards. The area is sometimes visited by wild horses.



## Ride C – Group 5



**Ride C, Group 5 Course includes:** Spring Heights Rd to Caliente Tower Road to Ella Springs Rd, to Ella Mountain Road and Ella Tower Rd to the BLM Lookout Tower. Then back down to Pennsylvania Canyon Road to visit the Elgin Schoolhouse.

Follow Carp Road to the first right to cross the stream—not the bridge to Hwy 317. After crossing the stream, look left and see what reminds folks of the show “Game of Thrones”. Continue on Carp Rd to Hwy 317 and turn right on Kane Springs Rd to Riggs Rd to Bishop Rd to Blith Rd to Cedar Wash Rd. *From there the group leader may follow the marked routes or use some private roads as a shortcut to Delamar Mine.* Marked roads include Cedar Wash Rd to Abandon Rd to Delmar Rd to the mine and ghost town. The return includes Delmar Rd to South Pole Line Rd to Applewhite Rd to Cyclone Rd to a short distance on the shoulder of US 93 before turning onto Antelope Canyon Rd for the return to Caliente. Ride length is approximately 88 miles.