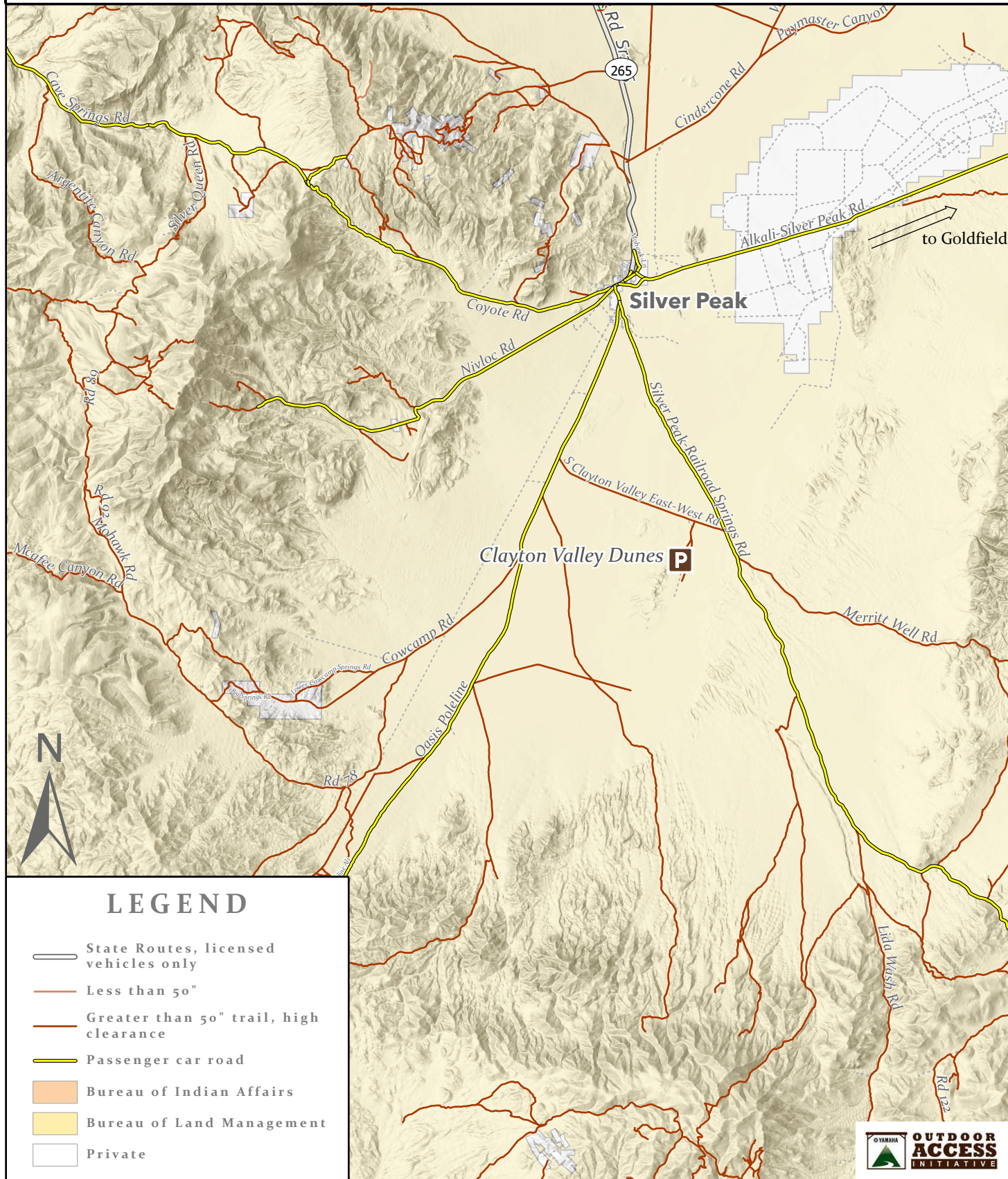




Clayton Valley Dunes OHV Trails

Silver Peak, Esmeralda Co., Nevada



LEGEND

- State Routes, licensed vehicles only
- Less than 50"
- Greater than 50" trail, high clearance
- Passenger car road
- Bureau of Indian Affairs
- Bureau of Land Management
- Private

0 0.5 1 2 3 4 5 Mi.

Sources: Esri, HERE, Garmin, Intermap, increment P Corp., GEBCO, USGS, FAO, NPS, NRCAN, GeoBase, IGN, Kadaster NL, Ordnance Survey, Esri Japan, METI, Esri China (Hong Kong), (c) OpenStreetMap contributors, and the GIS User Community,