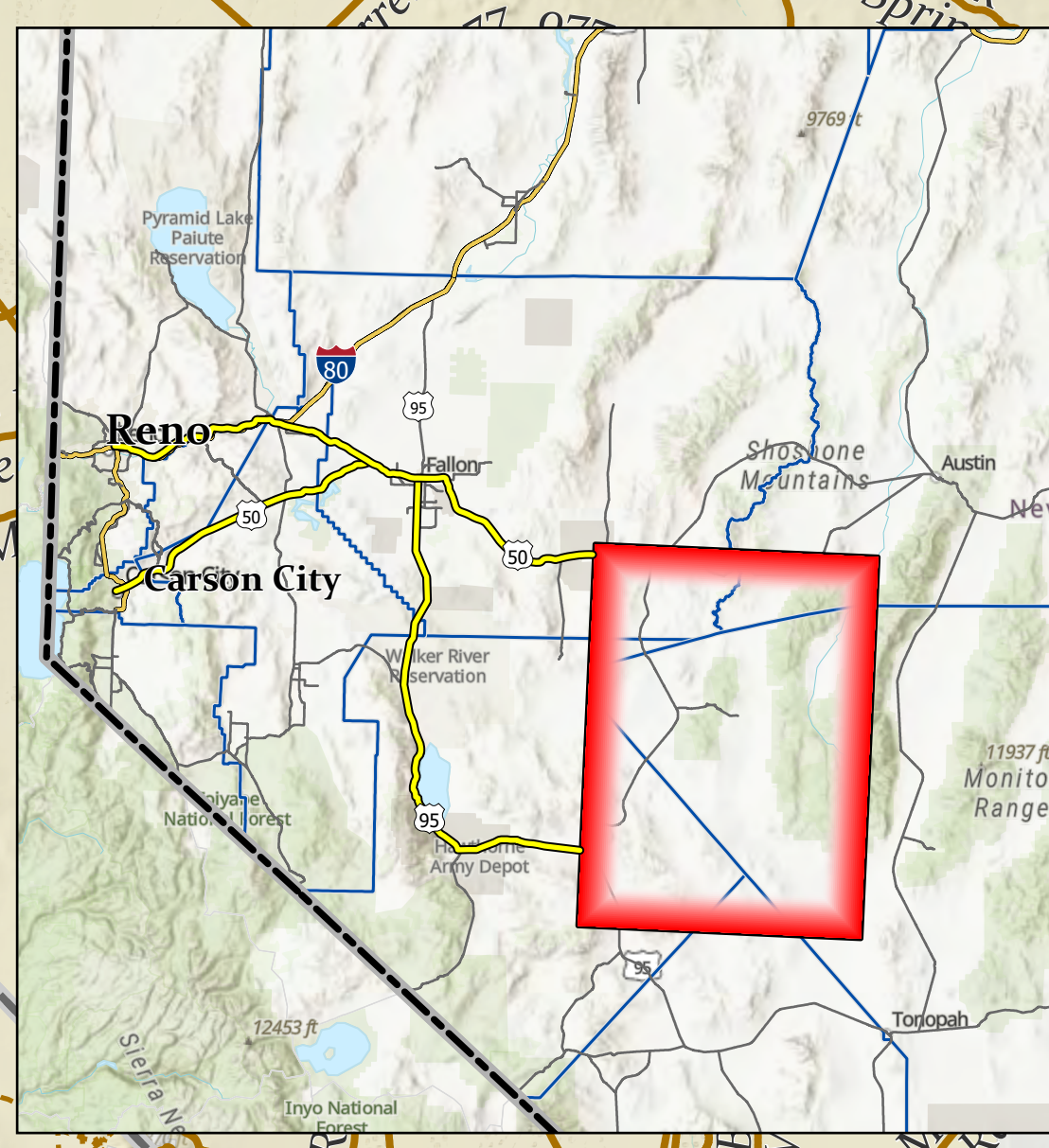
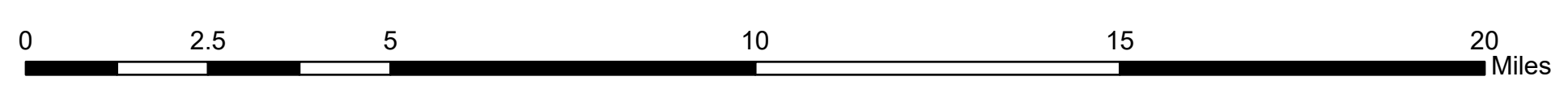
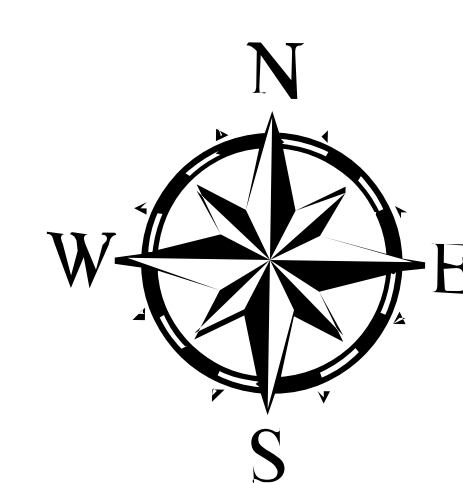


- Legend**
- Named OHV Roads and Trails
  - Unimproved Roads and Trails
  - Highways
  - State Route, licenced vehicles only
  - County Boundaries
  - Wilderness Area
  - Bureau of Indian Affairs
  - Bureau of Land Management
  - Department of Defense
  - Forest Service
  - Private
  - Parking
  - Improved Campground
  - Unimproved Campsite

# OHV TRAILS

## Northwest Nye County, NV



© 2015 National Map Accuracy Program (NMAP), Sources: Esri, Airbus DS, USGS, NASA, CNR, N. Robinson, NCEAS, NCS, OS, NMA, Goodatanyen, Rijkswaterstaat, GSA, Geoinf, FEMA, Intermap and the GIS user community, Sources: Esri, HERE, Garmin, FAO, NOAA, USGS, © OpenStreetMap contributors, and the GIS User Community

The Nevada Off-Highway Vehicle maps are intended as a navigation tool for Trail Users as they plan their journey. The Department makes no warranties, either expressed or implied, and assumes no responsibility for the accuracy of the data presented on the maps. The Trail user assumes the entire responsibility and risk as to the use of any or all information presented on the map.