

IN CASE OF AN EMERGENCY,
LOST OR INJURED

Contact the Lincoln County Sheriff's Office
By Calling **911** or **775-962-5151**
(Note: CELL phone signals are line of sight. Find the highest spot to get a CELL signal. Texting may work when a phone call may not.)
Give Your Name
Nature of Emergency
GPS Location
Other emergency numbers:
Mesquite Police Department **702-346-6911**
Mohave County Search and Rescue **928-341-4901**
If you need evacuation by medical helicopter call:
Mercy Air **800-222-3456**

It is preferred that you stay with your vehicle as long as possible to make locating you much easier, especially from the air. If you decide to walk for help, stay on well-traveled roads/trails. Leave information for searchers with the vehicle; where you're heading, the equipment and supplies you're taking, number in your party, when you left, and the color of the clothes you're wearing.



LINCOLN COUNTY,
NEVADA
OFF HIGHWAY
VEHICLES
(OHV) TRAIL MAP



IMPORTANT MAP
INFORMATION

Most significant intersections on major OHV roads and trails are signed between Mesquite and Caliente, Nevada. Many minor roads and trails branching off of the major roads are not named or signed.
Just because roads/trails appear on this map, they may not be in good shape or safe to travel for your vehicle and driving experience level. Use your own judgment before using trails. Road conditions can change during and after significant rain/snow events. Watch the weather.



Pennsylvania Canyon Road

EQUIPPING YOUR
VEHICLE FOR SAFTEY

- ✓ A spare tire, portable air compressor, plugs for fixing a tire
- ✓ Extra fuel
- ✓ Extra UTV Drive Belt
- ✓ Mechanical tools and wrenches
- ✓ Extra water for the vehicle
- ✓ A notepad and pencil for notes to leave searchers
- ✓ Maps, GPS, two-way radio
- ✓ First-Aid Kit



Rainbow Pass Road, really!

CRITICAL SURVIVAL
SUPPLIES

(NOTE: this is not intended to be a complete comprehensive list)

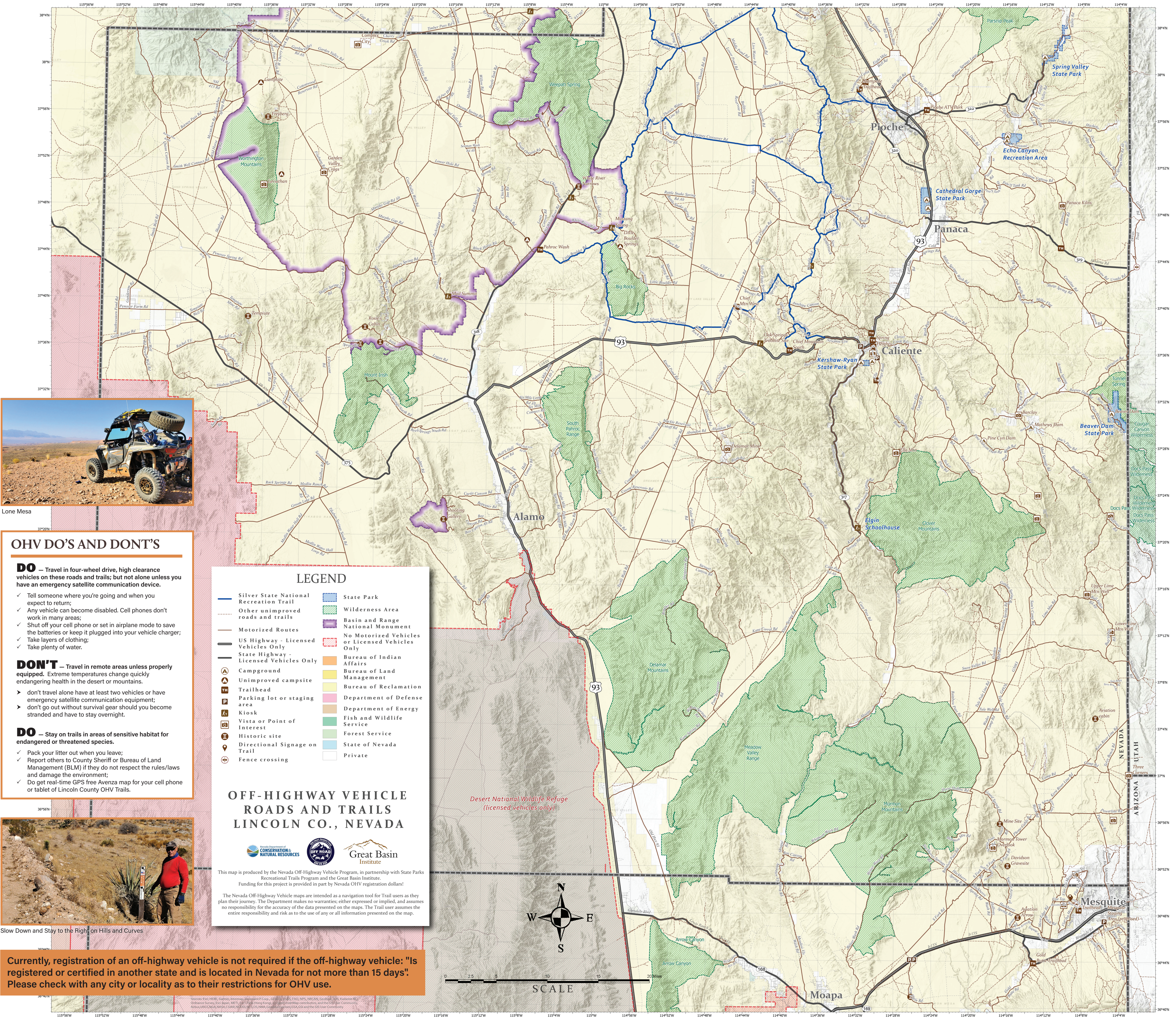
- ✓ Lots of water, at least a gallon per day per individual and water purification equipment.
- ✓ Energy Food/snacks high in carbohydrates and protein.
- ✓ Hats for sun protection, a windbreaker, rain gear, comfortable walking shoes or boots.
- ✓ Blankets, space blanket, and/or sleeping bags. Time of year and altitude can make temperatures vary greatly.
- ✓ Matches, lighters, or other fire starting supplies (candles, dryer lint, Vaseline, etc.) a medium-sized, sharp knife, folding or flex saw and hatchet.
- ✓ Flashlights with extra batteries.
- ✓ Signaling equipment/supplies: bright colored clothing and tarps, signal mirrors, and lights, fuses, two-way radios (FRS/DMR S, ham).
- ✓ Cell phone and extra battery—Cell phone signals are very limited in most areas, but most cell phones have a GPS in them. Texting can work in areas where phone signals are limited. If you can contact emergency services give them your GPS coordinates. Save your battery, only attempt contact for short times and optimal locations.
- ✓ Topo and roadmaps of the area you are in.
- ✓ GPS with extra batteries and a compass. Take time to learn how to operate your GPS and compass.
- ✓ Any medication you or your passengers take regularly, Tylenol, Advil or aspirin, Benadryl, suntan lotion, Chapstick, bug spray, first aid kit, antiseptic cream etc.
- ✓ Backpacks or bags capable of carrying water and survival gear.
- ✓ Large orange 65 gallon, four mil trash bags (used to pick up trash along the highways) can be used to protect a person from the elements.
- ✓ Survival handbook.

KOKOPELLI PRE-RIDE
SAFETY BRIEFING

- ▶ Run with your lights on;
- ▶ Wait at the intersection for the person behind you;
- ▶ If you come to an intersection and there is no one there to direct you, STAY THERE. We will come back to get you;
- ▶ On hills and curves, stay right and slowdown;
- ▶ Hand signal oncoming vehicles with number of vehicles behind you and use radio to report hazards and oncoming vehicles;
- ▶ To avoid dust, fall back a little and wear a mask. Be polite, don't dust bikers, hikers, campers, etc.;
- ▶ Check tire pressure and fuel level;
- ▶ Use sunscreen and stay hydrated;
- ▶ Look out for snakes, scorpions, and mountain lions;
- ▶ Wear layered clothing;
- ▶ Do a radio check before you leave. The leader will give you the channel frequency;
- ▶ Drive at your skill level and your vehicle's capability. Rides are not a race! Put the faster drivers up front;
- ▶ Enjoy the sights and stop as necessary for breaks, hydration, food, and photo opps.



Picnic on Flat Top Mesa



OHV DO'S AND DONT'S

- DO** — Travel in four-wheel drive, high clearance vehicles on these roads and trails; but not alone unless you have an emergency satellite communication device.
- ✓ Tell someone where you're going and when you expect to return;
 - ✓ Any vehicle can become disabled. Cell phones don't work in many areas;
 - ✓ Shut off your cell phone or set in airplane mode to save the batteries or keep it plugged into your vehicle charger;
 - ✓ Take layers of clothing;
 - ✓ Take plenty of water.

- DON'T** — Travel in remote areas unless properly equipped. Extreme temperatures change quickly endangering health in the desert or mountains.
- ▶ don't travel alone have at least two vehicles or have emergency satellite communication equipment;
 - ▶ don't go out without survival gear should you become stranded and have to stay overnight.

- DO** — Stay on trails in areas of sensitive habitat for endangered or threatened species.
- ✓ Pack your litter out when you leave;
 - ✓ Report others to County Sheriff or Bureau of Land Management (BLM) if they do not respect the rules/laws and damage the environment;
 - ✓ Do get real-time GPS free Avenza map for your cell phone or tablet of Lincoln County OHV Trails.



Slow Down and Stay to the Right on Hills and Curves

Currently, registration of an off-highway vehicle is not required if the off-highway vehicle: "Is registered or certified in another state and is located in Nevada for not more than 15 days." Please check with any city or locality as to their restrictions for OHV use.



Three Corners Monument



Delamar Mine Ruins



Barclay Cowboys



Wild Horses



Barclay Schoolhouse



Old Caliente Depot



Tri-State Monument



Elgin Schoolhouse



Inside Elgin Schoolhouse — Call Kershaw Ryan State Park for a tour

TREAD LIGHTLY

TRAVEL RESPONSIBLY

by staying on designated roads, trails and areas. Go over, not around, obstacles to avoid widening the trails. Cross streams only at designated fords. When possible, avoid wet, muddy trails.

RESPECT THE RIGHTS OF OTHERS

including private property owners, all recreational trail users, campers and others enjoying their recreational activities undisturbed. Leave gates as you found them. Yield right of way to those passing you or going uphill.

EDUCATE YOURSELF

prior to your trip by obtaining travel maps and regulations from public agencies. Plan for your trip, take recreation skills classes and know how to operate your equipment safely.

AVOID SENSITIVE AREAS

such as meadows, lake shores, wetlands and streams. Stay on designated routes to protect wildlife habitats and sensitive soils from damage. Don't disturb historical, archeological or paleontological sites.

DO YOUR PART

by modeling appropriate behavior, leaving the area better than you found it, properly disposing of waste, minimizing the use of fire, avoiding the spread of invasive species and repairing degraded areas.

Adapted from: <https://www.treadlightly.org/learn/>
Visit Website for more information.



Ella Mountain BLM Tower View



Kokopelli ATV Club Meeting on Flat Top Mesa

Tour Mesquite App

Discover all that Mesquite has to offer!



Features:
Historical Walking Tour, Points of Interest, Events, Social Media and more...

Available for iOS and Android Devices
Search: Tour Mesquite



get primitive



CITY OF MESQUITE

Website: www.mesquitenv.gov
tour.mesquitenv.gov

Facebook: @MesquiteNVRecreation
Phone: 775-726-3131

CITY OF CALIENTE

Website: www.cityofcaliente.com
Phone: 775-726-3131

LINCOLN COUNTY STATE PARKS

KERSHAW-RYAN

Website: parks.nv.gov/parks/kershaw-ryan
Phone: 775-726-3564
Email: krsp@parks.nv.gov

BEAVER DAM

Website: parks.nv.gov/parks/beaver-dam
Phone: 775-728-8101
Email: bdsp@parks.nv.gov

CATHEDRAL GORGE

Website: parks.nv.gov/parks/cathedral-gorge
Phone: 775-726-3564
Email: cgsp@parks.nv.gov

ECHO CANYON

Website: parks.nv.gov/parks/echo-canyon
Phone: 775-962-5103
Email: ecsp@parks.nv.gov

SPRING VALLEY STATE PARK

Website: parks.nv.gov/parks/spring-valley
Phone: 775-962-5102
Email: svsp@parks.nv.gov

More information at:
lincolncountynevada.com

DESIGNED BY:



Visually Clarifying Ideas
@6bitcreative
www.6BITCreative.com

Scan for more detailed trail
information at ohv.nv.gov



THANKS!

Your Nevada OHV registration fees provided funding for kiosks, signs at intersections in Lincoln and Clark Counties, and the development of this map. The signs and kiosks were installed by the Kokopelli ATV Club of Mesquite, Nevada through a Nevada OHV Commission Grant.

This grant was supported by:

- The BLM in Lincoln and Clark Counties
- The cities of Caliente and Mesquite, Nevada
- Lincoln County Commissioners
- Lincoln County Sheriff's Office and Search and Rescue

➤ The Kokopelli ATV Club of Mesquite, Nevada
Other private agencies and organizations also deserve credit for contributing to this project:

- The Kokopelli Landscaping Company
- Polaris and Can Am World of Scenic, Arizona
- The Shady Motel of Caliente
- The Nevada Conservation Corps of the Great Basin Institute which helped install most of the signage at Lincoln County intersections

Kokopelli ATV Club

Website: Kokopelli.ridetrails.org OR
facebook.com/groups/kokopelliatvclub

