

OHV Implementation Update

Signs of Change 3

A lot of positive change has been happening at Prison Hill....



In October of 2019, the kiosk looked like this:

Today, well-designed panels provide pertinent information and the kiosk sets the tone for the area with a professional, managed look.



6/23/2021



In 2020, implementation began on the Tot Lot.

Though not quite completed, today we have a functional, professional-looking facility.



As an experiment, we utilized the jackrail as a frame for a bench at the Tot Lot. It turned out well- looks good, very simple, inexpensive, and functional. We plan to install more of these at the Tot Lot, Beginner Area, and MX Area so that families can comfortably watch their kids.





We moved the porta-potty into a less conspicuous location and corralled it with jackrail. It now looks like an integral part of the staging area.



In 2020, implementation began on the Beginner Area.

Today, the boundary is defined by jackrail. There is a perimeter loop and a tight serpentine loop is ready to be ridden in. Bollards on the ends of the jackrail provide a finished, aesthetically-pleasing appearance.



6/23/2021

On June 12, the Friends of Prison Hill conducted their annual clean-up day. It was a beautiful day and at least 30 folks showed up for the clean-up. There were more than that since I'm sure none of the kids and some of the women didn't sign in- it was a great family day. As expected, not a huge amount of trash, but that really isn't the point. Several members of the Reno club- Wild West Jeeps- participated. Lots of good interaction and education. Also, lots of positive Prison Hill comments and comments on our management, signing, and improvements. We took advantage of the labor force to relocate 400' of jackrail fence and install another 665' around the Tot Lot and Beginner Area- great job and teamwork. Lunch was provided by the Friends.



Jackrail goes up fast with a crew of ten people. Good fun and camaraderie. Thank you Friends!

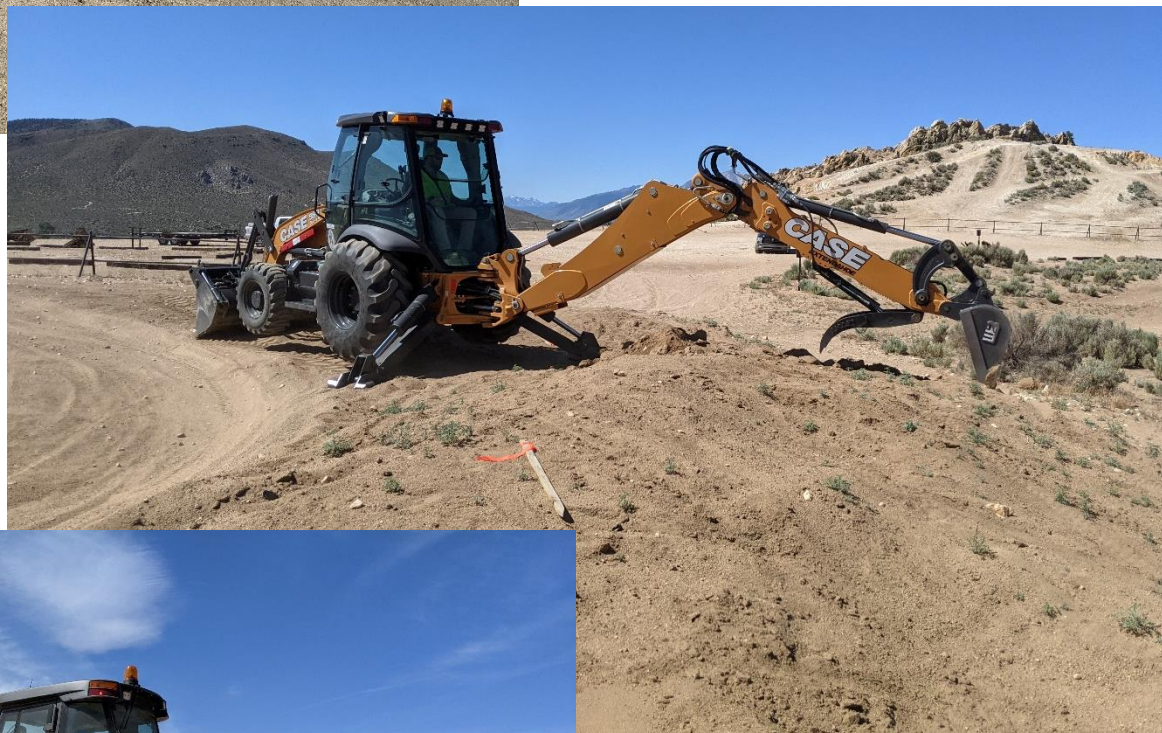


6/23/2021



Except for the FOPH, the staging area work has been done by personnel from Carson City Parks, Recreation & Open Space (PROS), NOHVCC, and RecConnect. A backhoe, skip loader, tool cat, trailer, and a variety of tools have been provided by PROS.

To increase safety, a MX berm needed to be relocated. Jared Whitaker with PROS has been indispensable.





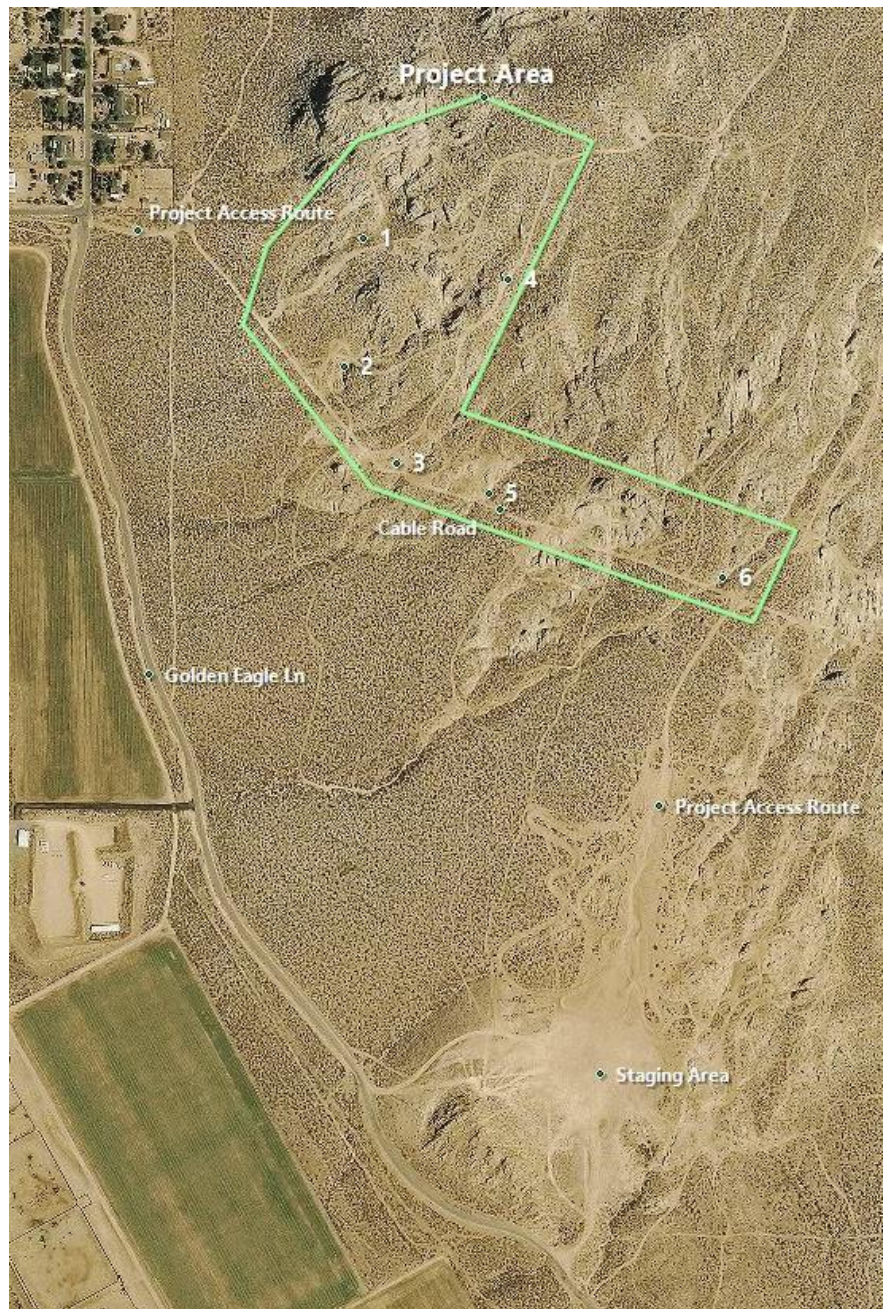
On June 19, there was a joint law enforcement/education day with PROS Rangers and Carson City Sheriff Deputies. It was extremely hot, so there weren't a lot of riders, but it was a good time to become familiar with Prison Hill and to share notes and protocols between agencies.



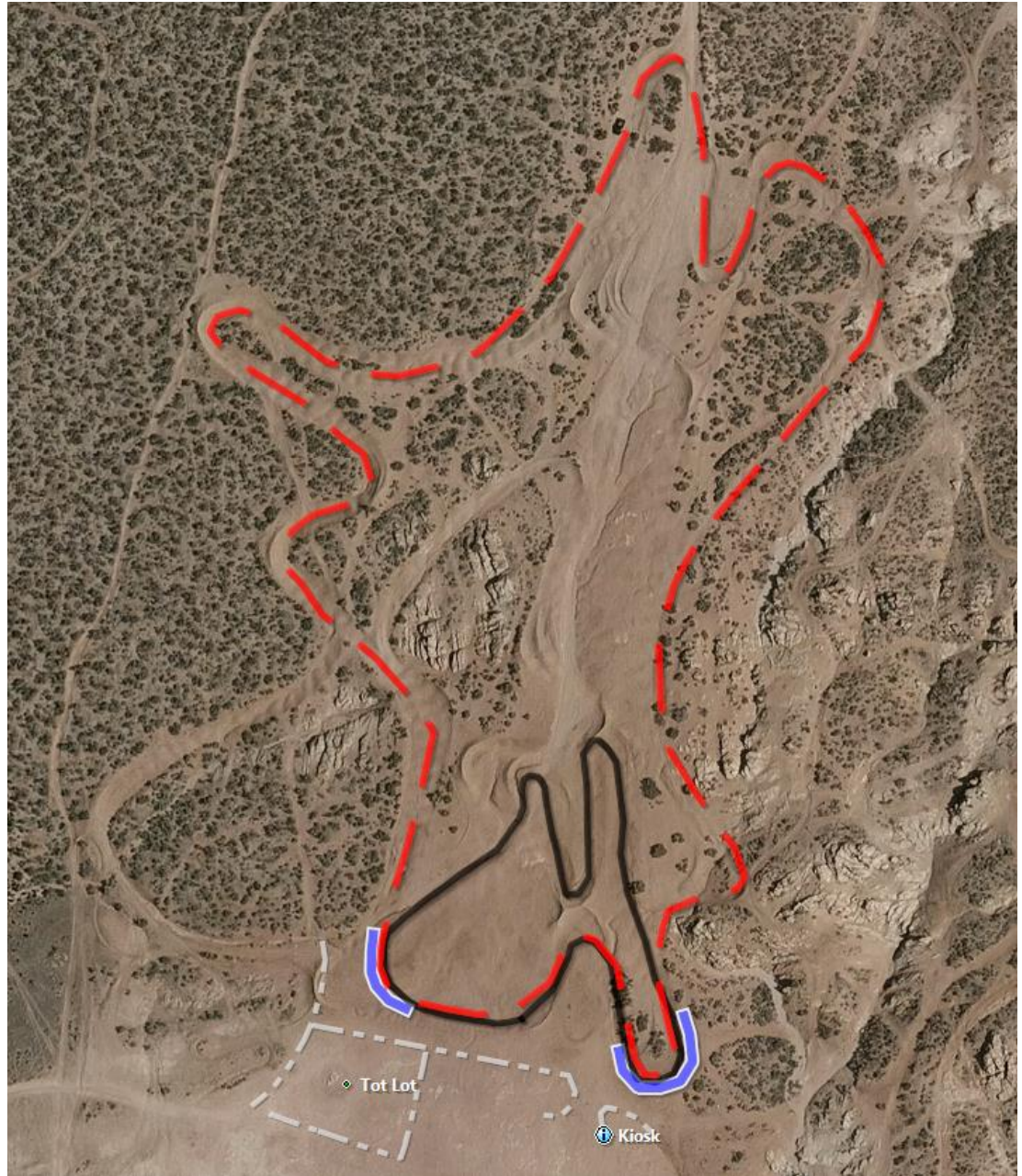




After prioritizing a list of potential projects, the team decided to move forward with the West Basin Project. This project has been designed, specifications written, advertised, and is about to be awarded. The project covers a large area and includes six main work areas identified on the vicinity map: 1) West Basin- closure of undesigned routes, rehab, narrowing of routes, drainage; 2) Mailbox Canyon- closure of bailouts and undesigned routes, rehab, installation of entrance filter; 3) Once is Enough- closure of routes to better define the entrance, rehab; 4) West Summit Road- reconstruction, drainage, removal of donikers; 5) Gunslinger- installation of entrance filter; 6) Death Walls- installation of entrance filter. Coinciding with this work will be final fencing, signing, trail marking, and trail signing so that designated crawler routes will be clearly identifiable. Once this work is underway, we will produce another Project Update.



Motocross (MX) use has increased considerably in the last year. There have always been MX berms in the play area, the size and number of those has increased considerably. This could be due to the general COVID trend toward outdoor recreation and/or the lack of MX opportunities in the Valley. During the initial project planning, there was a historic, but smaller MX contingency and we decided to allow, but not encourage MX use so that we could better manage speed, risk, and high-impact riding in and around the staging area. Now, we feel that we need to allow and encourage the use so we can better manage it. We have modified the staging area plan to show a long and short Sand Track loop. We have also consulted with two MXers to give us input and feedback as we move some of the berms for safety and drainage. So far, the feedback has been positive.



This year has certainly been hotter and drier than normal, if there even is a normal anymore. Everyone is concerned about the extreme fire risk. On Red Flag days, PROS closes Prison Hill to OHV use to conform to the issued Red Flag time period.





Thank you to our funding supporters!

