

State of Nevada Off-Highway Vehicles Program

High Clearance Vehicle Route and Motorized Trail Maintenance Grant

Humboldt-Toiyabe National Forest

Maintenance Route Proposal

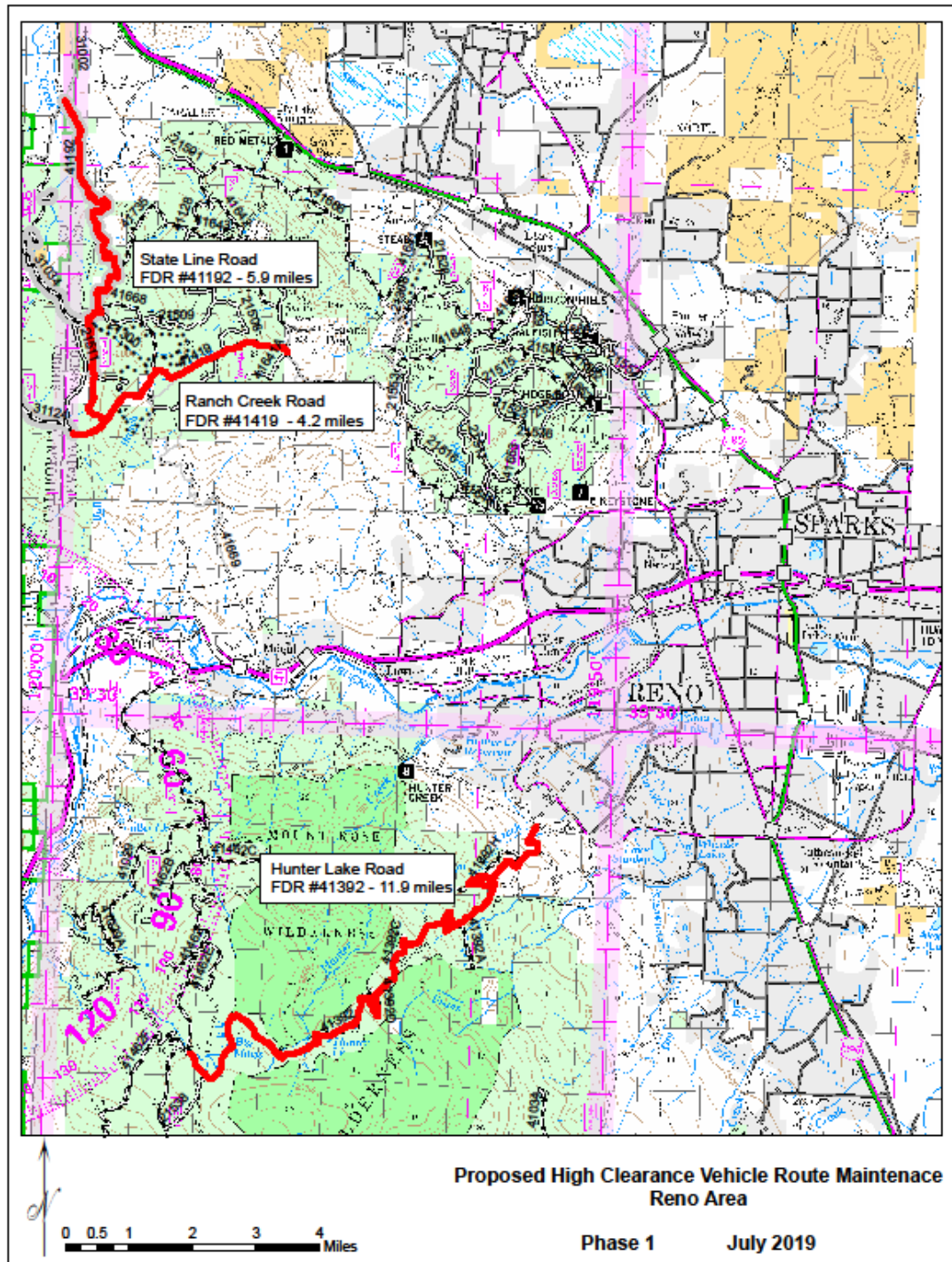
Project Number NVOHV 19-05

The Humboldt-Toiyabe National Forest was granted \$77,649 from the Nevada OHV Program to maintain 30 miles of high clearance motorized routes that do not receive routine maintenance. Forest routes were evaluated after the 2018-2019 winter and several routes were considered for maintenance under this grant. Routes where maintenance would enhance the OHV experience on the National Forest as well as protect the natural resources of the area were prioritized. The following routes are proposed to the Nevada Commission on Off-Highway Vehicles to receive maintenance during the 2019 and 2020 road maintenance season.

The Humboldt-Toiyabe proposes to perform maintenance on these high- clearance roads. Maintenance will be done focusing on activities to promote the longevity of the corridor to sustain use over many years. Draining mud holes and outsloping these areas, constructing driveable dips and lead out ditches, constructing hardened low water crossings, cleaning edge ditches, regrading gullies and ruts, and restoring the route template will be done as maintenance activities along the routes.

High Clearance Vehicle Road Maintenance on the Humboldt-Toiyabe National Forest		
Proposed Routes		
Road Name	Forest Development Road #	Total miles for proposed maintenance
State Line Road	41192	6.0
Hunter Lake Road	41392	10.0
Ranch Creek Road	41419	4.0
Wheeler Pass	45601	10.0
Total Miles		30.0

Three routes that are proposed near the Reno area on the Carson Ranger District: State Line Forest Development Road (FDR) #41192, Ranch Creek FDR #41419, and the Hunter Lake FDR#41392.



The State Line road runs from the Dog-Long Valley road just south of Bordertown, Nevada to the Ranch Creek road. This is the east side of a loop road that joins back with the Dog-Long Valley road or can be traveled to access a wide variety of roads in the area. Jeeps, quads, and motorcycles use this route as either their focused recreation point or to ride to other areas.

This road is 5.9 miles long and has poor drainage where water has created soft spots

**Proposed High Clearance Vehicle Route Maintenance
State Line Road and Ranch Creek Road**

Phase 1 July 2019



Photo of erosion cutting at the roadbed on State Line road

Ranch Creek Forest Development Road #41419

The Ranch Creek road is 4.2 miles long and runs from the Mitchell Canyon – Long Valley road east up the ridge to Peavine Peak along Bull Ranch Creek. This road is extremely popular with motorcycles because it accesses a system of single-track routes with a wide variety of terrain. ATV's and UTV's also use this area extensively and is part of great day-ride from Reno to Dog Valley.

The top three miles of road coming from the top of Peavine Peak and along Bull Ranch Creek needs drainage features reestablished to direct the water off the road. This will improve riders experience in the area and protect the water resource and habitat.

Hunter Lake Forest Development Road #41392

The Hunter Lake road is an 11.9 mile route that runs from southwest Reno to the Garson Road through the Mt Rose Wilderness accessing a large variety of recreational opportunities. This route is used in the summer and fall with some great views of the city of Reno. Jeeps, quads, and motorcycles use this route to access a makeshift motocross track, jeep trails, and some camping spots at Hunter Lake. This road has been adopted by the Hills Angels 4x4 club who do routine

maintenance on the route such as clearing brush, removing deadfall, installing natural barriers around meadows, and installing kiosks and signs.

Hunter Lake road is severely eroded, incised, and over widened where users have created bypasses. The road has degraded from the poor drainage and many riders cannot access this area because of concern for their vehicle and personal safety. Maintenance on this road would improve or create drainage features.



Google image of Ranch Creek Road.

Photo of Hunter Lake road erosion damage.





Wheeler Pass Forest Development Road #45601

Wheeler Pass is a 13.2 mile road running from north of Pahrump, Nevada to Cold Creek Springs along the west side of the Mt Charleston Wilderness. Wheeler pass road is highly used by OHV's, jeeps, and 4 wheel drive trucks. The route follows drainages and often gets water creating rilling down the road or sections washing out. The south end of the route has



challenging steep sections that are exacerbated by water eroding channels in the travel way.

Maintenance such as improving or creating driveable dips, outsloping, or reshaping ditches will make this route accessible to more OHV users and protect the natural resources in the area.

Google image of Forest Portal sign at Wheeler Pass



Google image of jeeps traversing Wheeler Pass



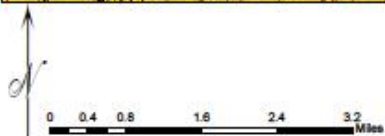
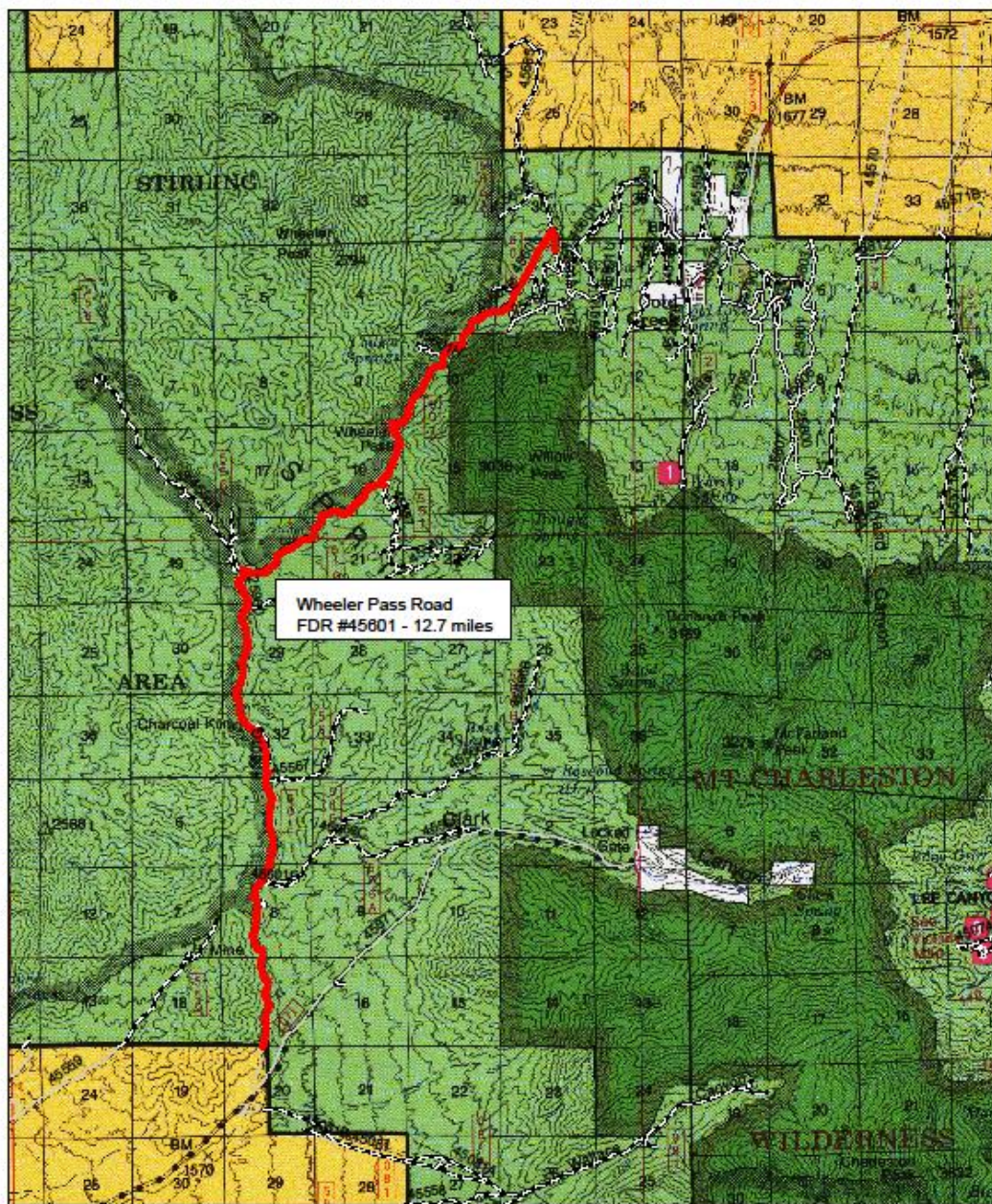
Sources: Esri, HERE, Garmin, USGS, Intermap, INCREMENT P, NRCan, Esri Japan, METI, Esri China (Hong Kong), Esri Korea, Esri (Thailand), NGCC, (c) OpenStreetMap contributors, and the GIS User Community



0 1.75 3.5 7 10.5 14 Miles

**Proposed High Clearance Vehicle Route Maintenance
Spring Mountains Natural Recreation Area Vicinity Map**

Phase 1 July 2019



**Proposed High Clearance Vehicle Route Maintenance
Wheeler Pass Road**

Phase 1

July 2019